



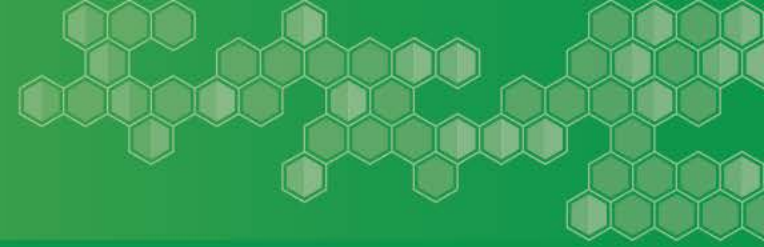
Module 1

NOMS and SPARS



Helpful information about the National Outcome Measures (NOMS) and the SPARS web-based system for data entry and data management

What's covered in this module

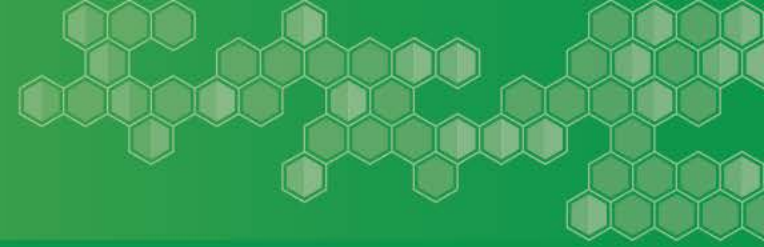


- What is the [NOMS](#)?
- Why do we collect NOMS?
- Who specifically is the NOMS data collected from?
- Referral Pathways (Example from Wyoming) and the SMHRP Toolkit
- What is SPARS?

The [NOMS Question-By-Question Instruction Guide](#) provides detailed information regarding collecting NOMS data from students. A [Spanish Version](#) of the NOMS is also available.

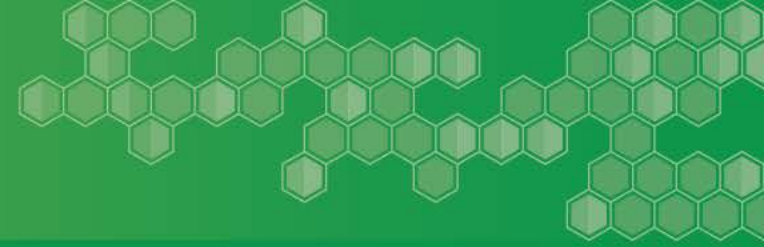


What is the NOMS?



- SAMHSA requires all [Project AWARE](#) recipients to collect performance measures for services called the National Outcome Measures (NOMS).
- The NOMS gathers diagnostic information from students who receive Tier 3 services and supports including:
 - Behavioral health diagnoses
 - Demographics
 - Functioning, military family and deployment
 - Stability in housing
 - Education
 - Criminal justice status
 - Perception of care
 - Social connectedness
 - Reassessment and discharge status
 - Services received
- It takes about 30 minutes for a MH professional to complete a NOMS interview with a student (or student's caretaker).

Why do we collect NOMs?



According to SAMHSA, NOMS data may:

- Demonstrate effectiveness of school mental health services integration;
- Identify gaps in services and for populations of focus;
- Demonstrate the need for the relevant early intervention/prevention programs;
- Assist state education agencies to demonstrate the need for supportive resources; and
- Inform schools on the continued importance of a supportive and responsive school climate.

Who specifically is the NOMS data collected from?

The NOMS assessment interview is for students experiencing academic, social and/or behavioral challenges and have been referred to and receive Tier 3 services.

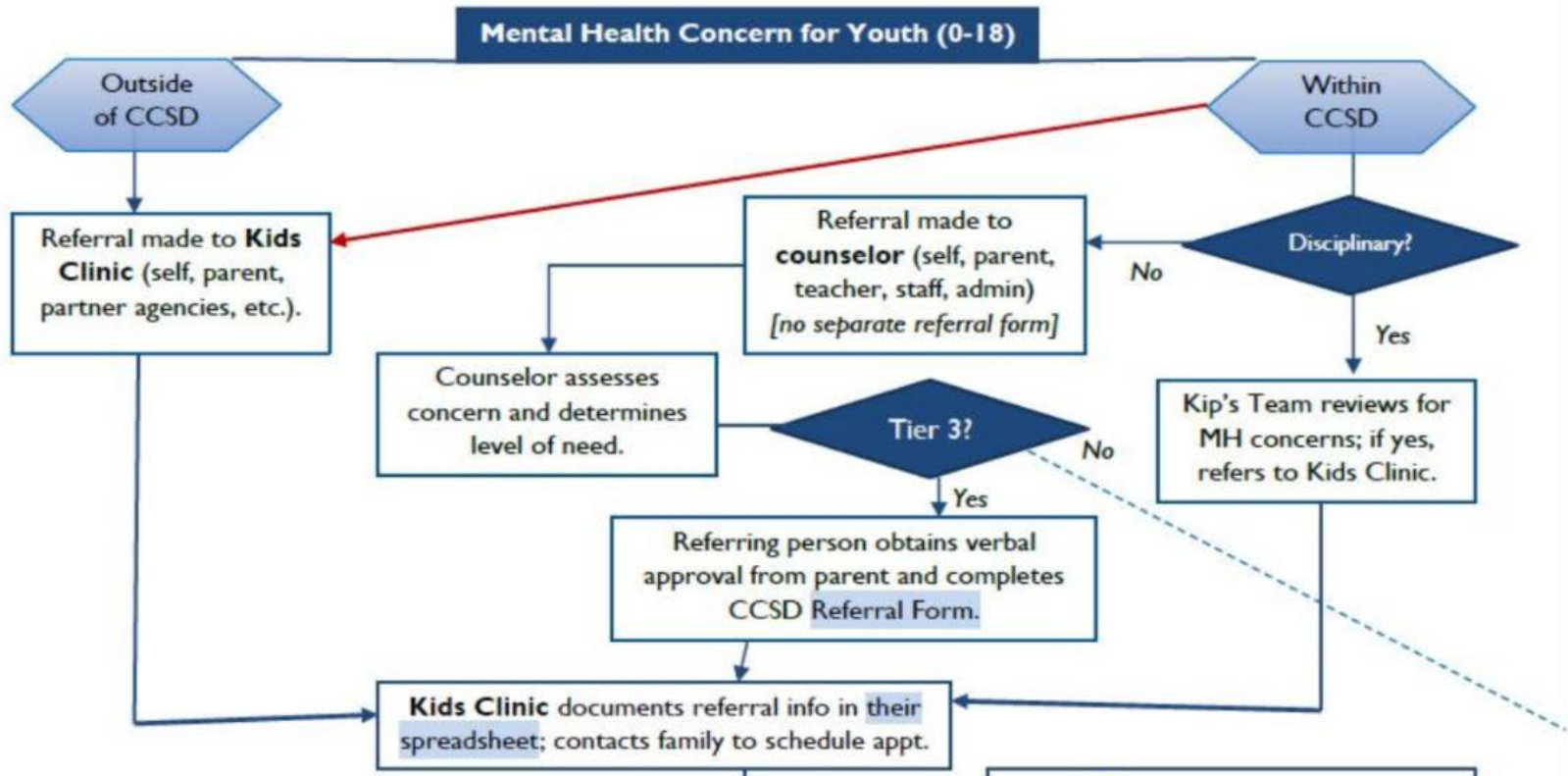
Who to collect NOMS data from	Criteria
Student	Age 11 or older
Caregiver (on behalf of the student)	Age 10 and younger
Either the student or caregiver	Depends on who is being interviewed

Include students who may or may not be funded by Project AWARE.

Referral Pathways (Example from Wyoming)

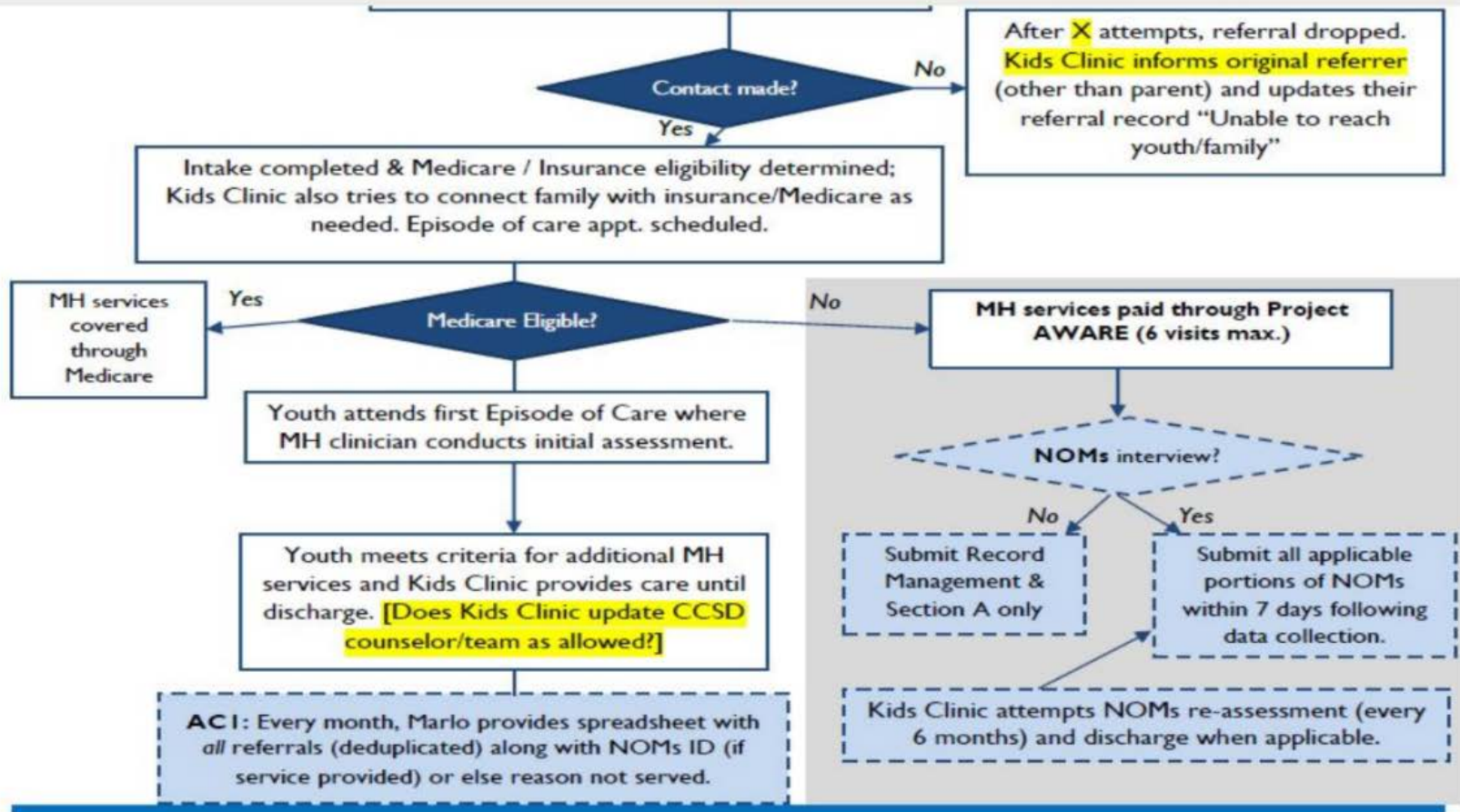
LEA #1 Referral Pathway

CCSD Mental Health Referral Process Flowchart: Tier 3



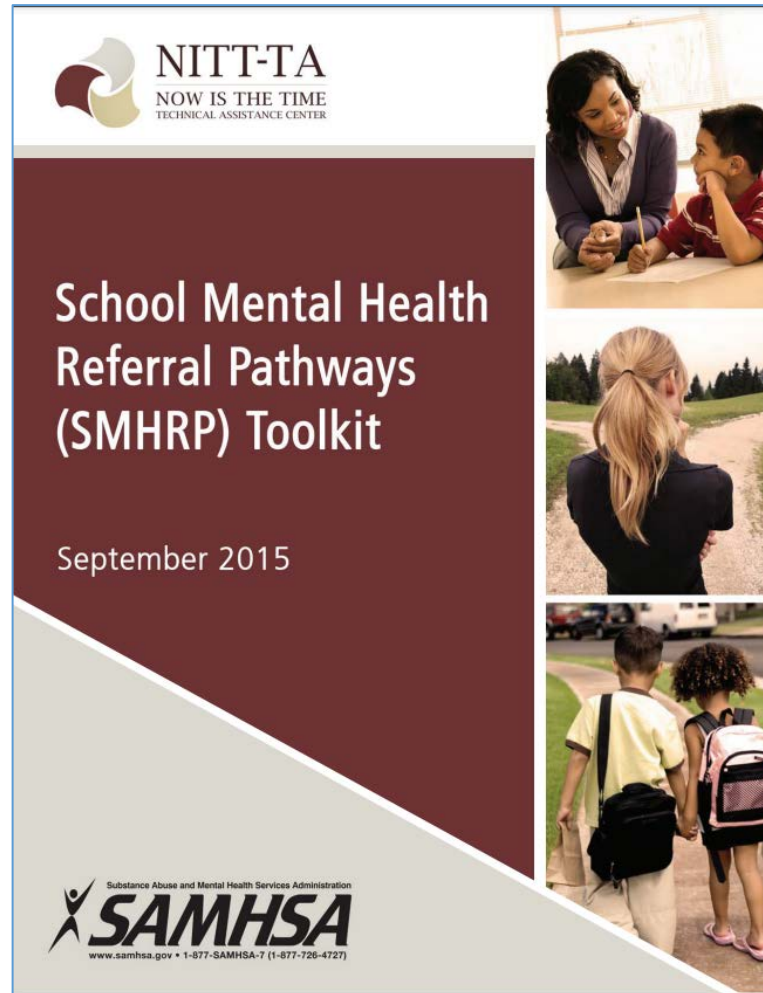
Referral Pathways (Example from Wyoming)

LEA #1 Referral Pathway Continued

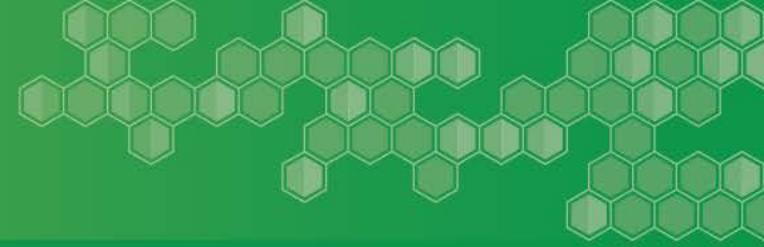


School Mental Health Referral Pathways Toolkit

For best-practice guidance and practical tools



What is SPARS?



- [SPARS](#) is SAMHSA's Performance Accountability and Reporting System website. SPARS has multiple data collections but Colorado Project AWARE will use it for the NOMS.
- Use SPARS for these two tasks:
 - NOMS Data entry
 - NOMS Reports (e.g., reassessment rates)
- SPARS help includes:
 - Training
 - Resource Library and FAQ
 - Data Collection Tool Resources
 - Help Desk
 - Technical Assistance Request System (not available)



**With the new day comes new
strength and new thoughts.**

Eleanor Roosevelt