

The 10th Mountain Division

This task is designed so that you can work directly with primary sources. Some of the documents may have been edited for the purposes of this question. As you analyze each source, consider the point of view that may be presented, as well as the author/creator of the source.

Directions:

- Read the question. Do you understand it?
- Ask yourself, “What do I already know about the 10th Mountain Division?”
- Now, look at the sources. Notice how each source has its own section. Study each source and highlight any information that will help you answer the question.
- Each source is followed by a question. Write a short answer to each of these questions in the blank that follows it.
- When you are finished studying the sources, go on to Part B.
- After reviewing the sources identify information from the sources that will help you to write your essay, and then go on to Part C.
- Finally, write a short essay that answers the question.

Questions: What was the 10th Mountain Division? What role did they play in WWII? How were some members of the 10th Mountain Division important in Colorado’s ski industry?

Historic Background:

In November 1941, the United States Army created a training site in the Colorado Rocky Mountains close to Leadville, Colorado, that became Camp Hale. The 10th Mountain Division trained at Camp Hale where volunteers learned rock climbing, strength through long distance marches and cross country ski trips, downhill skiing, winter/mountain survival techniques, and combat throughout the winter of 1943-1944. In June 1944, the Division transferred to Camp Swift, Texas, for additional training until the division was deployed to Italy in January 1945. Over 200 (276 total) women served at Camp Hale as part of the Women’s Army Corps (WAC) and Army Nurses Corps (ANC). These women

were not training to fight but they performed important duties at the camp through their work as secretaries, nurses, mechanics, and radio operators.

Task:

Part A: Read **each** source carefully and answer the question after each source.

Part B: Identify and list 5 pieces of information from the sources that will help you to answer the question.

Part C: Use your answers from Part A, information from the sources, and your knowledge of the 10th Mountain Division to write a well-organized essay. Be sure that your essay answers the question!

Source 1: Pioneers of the 10th Mountain Division, 1941

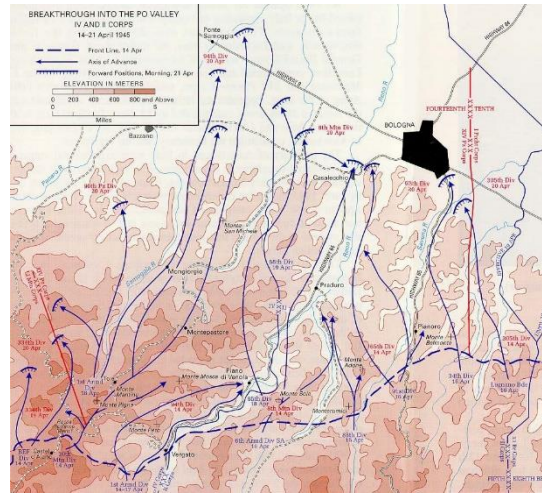


Question: Why do you think the area near Leadville was ideal for training the soldiers?
What were the men of the 10th Mountain Division training to do?

Source 2: The Po Valley, Italy.



Headquarters of the 10th Mountain Division, the Po Valley.



Question: Describe how the physical geography is similar between Italy and Colorado. How might these geographic similarities lead to similarities in climate?

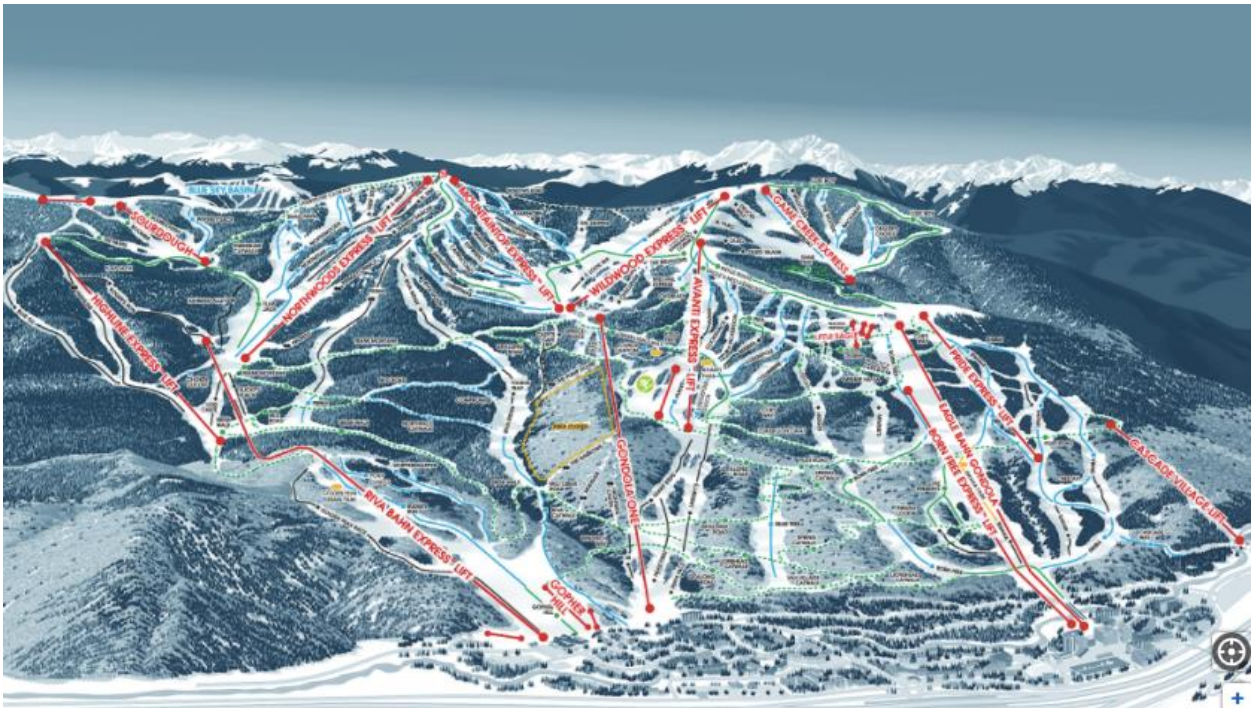
Source 3: Excerpt from *Camp Hale* by Erma Paul Robinson

“The first time I heard of Camp Hale was when the first WACs were sent to the Colorado camp through Dispensary [hospital] Number Two. They had finished their basic training at Fort Des Moines at Des Moines, Iowa. I ran the dispensary and my friend Welshie was the medical aide.

... We gathered all our belongings and got on a train for Colorado. We changed trains at Pueblo, Colorado and we were soon arriving at Camp Hale. We were given beds on each side of our new friend, Jeanne Dolt. She was a kindred [similar] soul who became our buddy, who didn't fit in with the other girls... She was the photographer for the Tenth Mountain Division and climbed the mountains with the ski troopers. She also drove a car for the motor pool.

Question: Explain some of the roles that women had at Camp Hale.

Source 5: Vail, CO. Ski Area Trail Map



Question: Knowing what skills the 10th Mountain Division men had, what role do you think they may have played in the development of the ski industry in Colorado?

Part B Directions

Using information from the documents, make a list of some of the facts that will help you to answer the question.

1. _____
2. _____
3. _____
4. _____
5. _____

Part C Directions

Write an essay using the information from the documents and your knowledge of social studies to answer the question:

- Be sure to include your notes from Part B.
- Be sure to refer back to each of the documents.
- Develop your essay using correct grammar, punctuation, and spelling.

Questions: What was the 10th Mountain Division? What role did they play in WWII? How were some members of the 10th Mountain Division important in Colorado's ski industry?

Student Essay:

